

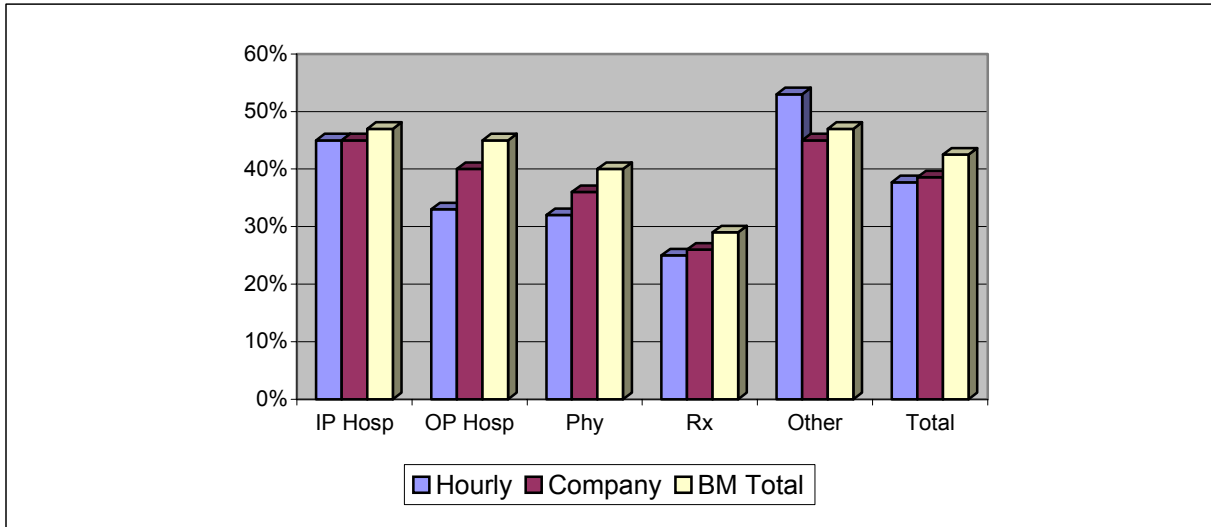
# Network Discounts

MedMAP

XYZ Corporation

Data Incurred Through 12/31/06  
Paid Through 03/31/07

## Network Discount Summary - by Type of Service (Current Calendar YTD)



## Network Discount Data - by Type of Service (Current Calendar YTD)

Type of Service	Calendar 2006 Year End						
	Network Submitted Charges		Network Discounts		Percent Discount		
	Hourly	Company	Hourly	Company	Hourly	Company	BM Total
Inpatient Hospital	\$9,289,773	\$16,166,605	\$4,180,398	\$7,274,972	45.0%	45.0%	47.0%
Outpatient Hospital	\$7,625,933	\$16,054,337	\$2,516,558	\$6,421,735	33.0%	40.0%	45.0%
Physician	\$7,051,400	\$17,366,470	\$2,256,448	\$6,251,929	32.0%	36.0%	40.0%
Prescription Drugs	\$3,144,231	\$10,013,100	\$786,058	\$2,603,406	25.0%	26.0%	29.0%
Other	\$3,177,680	\$6,736,085	\$1,684,170	\$3,031,238	53.0%	45.0%	47.0%
<b>Total</b>	<b>\$30,289,016</b>	<b>\$66,336,597</b>	<b>\$11,423,632</b>	<b>\$25,583,280</b>	<b>37.7%</b>	<b>38.6%</b>	<b>42.5%</b>

Type of Service	Calendar 2005 Year End						
	Network Submitted Charges		Network Discounts		Percent Discount		
	Hourly	Company	Hourly	Company	Hourly	Company	BM Total
Inpatient Hospital	\$12,234,652	\$16,101,424	\$7,340,791	\$7,245,641	60.0%	45.0%	47.0%
Outpatient Hospital	\$6,739,911	\$15,018,287	\$2,156,771	\$5,857,132	32.0%	39.0%	42.0%
Physician	\$6,608,625	\$17,177,166	\$2,180,846	\$6,183,780	33.0%	36.0%	38.0%
Prescription Drugs	\$2,900,066	\$9,568,318	\$725,016	\$2,392,079	25.0%	25.0%	27.0%
Other	\$3,107,213	\$6,107,437	\$1,708,967	\$2,748,347	55.0%	45.0%	47.0%
<b>Total</b>	<b>\$31,590,466</b>	<b>\$63,972,632</b>	<b>\$14,112,392</b>	<b>\$24,426,979</b>	<b>44.7%</b>	<b>38.2%</b>	<b>41.0%</b>